

## Run the SMARTBoard Connection Wizard

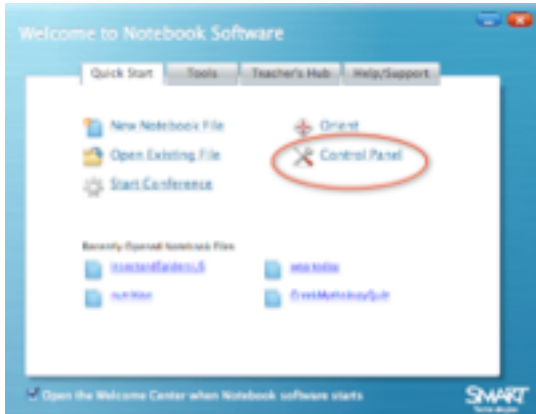


Hook your SMART board to your laptop and then check the light on the bottom right of the board. It should go to **solid green** (after being red or flashing green).

If the light is still blinking green after 20 seconds, you will need to use the

### ***Connection Wizard***

to get your laptop and SMART board to communicate properly. After starting **Notebook** software, click on "**Control Panel**" then "**Connection Wizard**"



to make the board talk to your computer. These screenshots show the windows and their controls. Following this procedure works in most cases.

